



SERVICE INSTRUCTION

SI-32-02
Revision 0

TITLE: Brake Mount Side Link Replacement.

SUBJECT / REASON / DESCRIPTION:

The purpose of this Service Instruction is to allow the replacement of the four existing B17 Brake Mount Side Links with four **longer** B17 Brake Mount Side Links. The longer links will tilt the B12-1 Brake Pedal Assembly forward. Some pilots will find this new brake pedal position more comfortable.

COMPLIANCE:

Compliance is optional.

EFFECTIVITY:

General

APPROVAL:

This modification has been approved by FAC Engineering and TCCA where applicable.

MANPOWER REQUIREMENTS:

4 hrs Pilot Side.
2 hrs Copilot Side.

SPECIAL TOOLS / EQUIPMENT:

N/A

Found Aircraft Canada Inc.

R.R.#2, Site 12, Box 10 ; Parry Sound, Ontario, Canada; P2A 2W8
T (705) 378-0530 F (705) 378-0594

www.foundair.com

SI-32-02

28-JUL-04

Page 1 of 10

PARTS LIST (BILL OF MATERIALS):

Kit No: FAC-SI-32-02

NOTE: Quantities listed are for the Pilot Side only. Two FAC-SI-32-02 kits would be required to modify both the Pilot and Copilots side.
Cost of kit available upon request.

WEIGHT & BALANCE:

Negligible Change

DRAWINGS/MANUALS:

Not applicable.

IMPLEMENTATION INSTRUCTIONS:

All work shall be completed in accordance with standard aircraft practices as defined by AC 43-13 and the instructions given in this service document.

1. Remove Center Console, RH access panel cover, Part number C245-22, and retain hardware. See Figure 1.
2. Remove bolts securing C393-1 rudder pedal (Left) to C301-1 shaft and retain hardware. See Figure 1.
3. Remove cotter pin securing C251 Bellcrank Retaining Bushing. See Figure 2.
4. Remove approximately 1-1/4" of paint on C301-1 to the left of C251 Bellcrank Retaining Bushing.
5. Remove AN4-32A bolt from C254-1 Pilot Right Rudder Pedal Assembly and C352-2 Rudder Push Rod Assembly. See Figure 2.
6. Slide C251 and C254-1 as far left as possible to provide access to the B17 Brake Mount Side Link bolts.
7. Remove cotter pins, nuts, bolts, links, and washers from the upper and lower connections of B17 links. Retain hardware.

NOTE: Special washers, AN975-3, are used at the top of the links. See Figure 3.

Found Aircraft Canada Inc.

R.R.#2, Site 12, Box 10 ; Parry Sound, Ontario, Canada; P2A 2W8
T (705) 378-0530 F (705) 378-0594

www.foundair.com

SI-32-02

28-JUL-04

Page 2 of 10

8. Remove the B17 links and install, using existing hardware, new links provided with kit. See Figure 4.

CAUTION: Be sure to install screws with heads facing inboard. Installing the screws with the nuts adjacent to the console may cause a fouling condition resulting in a jammed control.

9. Slide C393-1 Pilot Left Rudder Pedal Assembly as far right as possible.

NOTE: It is not required to remove any paint from this end of the shaft.

10. Remove cotter pins, nuts, bolts, links and washers from the upper and lower connections of B17. Retain hardware.

NOTE: Special washers, AN975-3, are used at the top of the links.

11. Remove the B17 links and install, using existing hardware, new links provide with kit. See Figure 5.

CAUTION: Be sure to install screws with heads facing outboard. Installing the screws with the nuts adjacent to the interior panel may cause a fouling condition resulting in a jammed control.

12. Slide C393-1 Pilot Left Rudder Pedal Assembly back to original location.
13. Slide C254-1 Pilot Right Rudder Pedal Assembly back to original location.
14. Assemble hardware, except the console side cover, in reverse order of steps 10, 7 through 2.
15. Complete independent inspection of Rudder Control.
16. Install Center Console, RH access panel cover, Part number C245-22.
17. Verify full travels of brake pedals, correct brake action, and pilot foot position for comfort.
18. Check brake pedals and rudder pedals for fouling on console and interior panel.
19. Verify that the brakes, applied by pilot foot pressure, will hold the aircraft while at full throttle setting.
20. The Copilot brake links can be installed in a similar fashion with the exception that the Copilot Rudder Pedals are two-piece units and only require the removal of one bolt per

pedal arm. The pedals will turn in their sockets to provide B17 link hardware clearances. See Figure 6.

LOG BOOK CERTIFICATION:

Update Log Book to state, “Service Instruction SI-32-02, Brake Mount Side Link Replacement”, and “Independent inspection of Rudder and Brake Control System completed”.

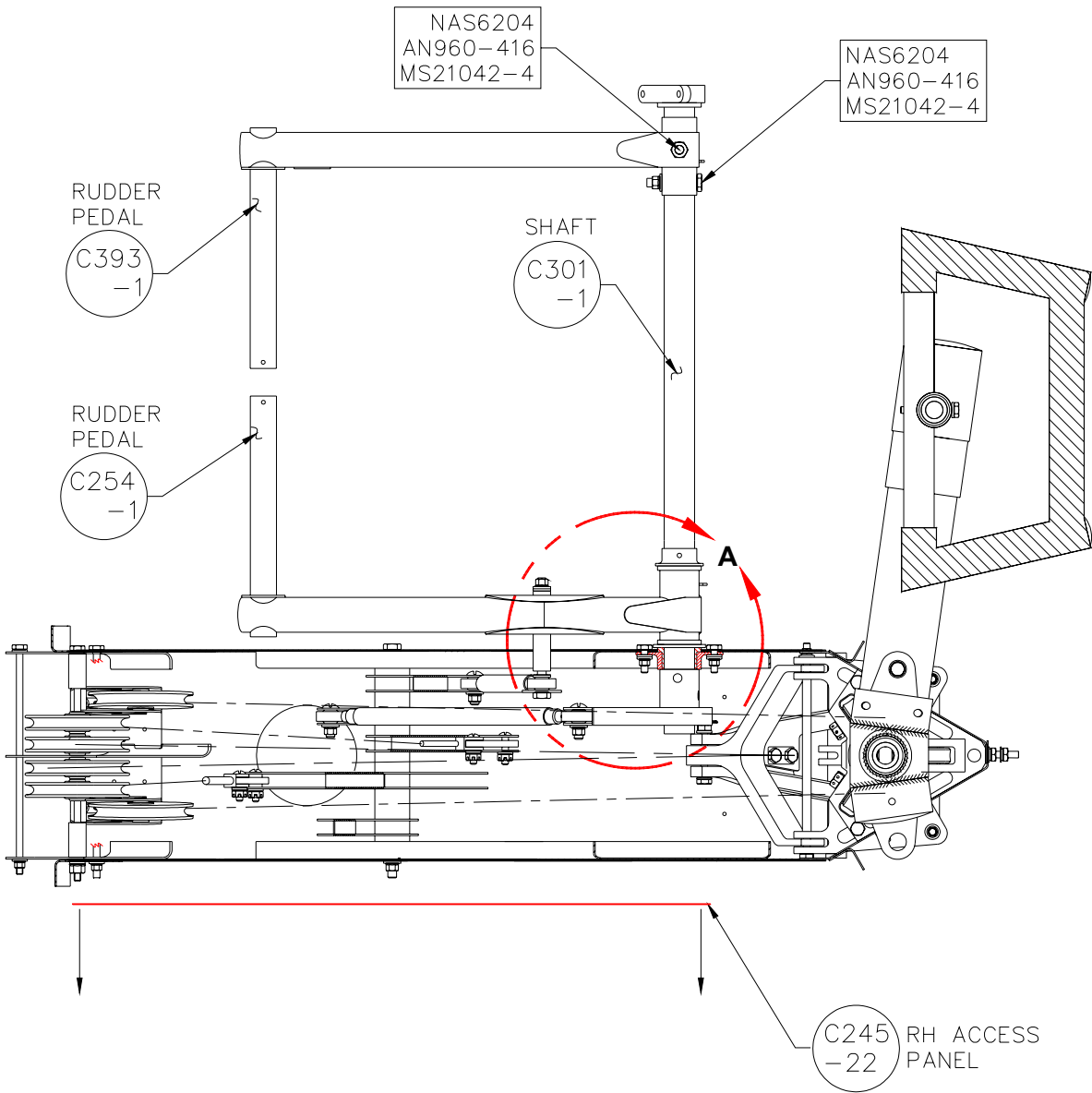


Figure 1
Pilot Rudder Pedals
View Looking Forward

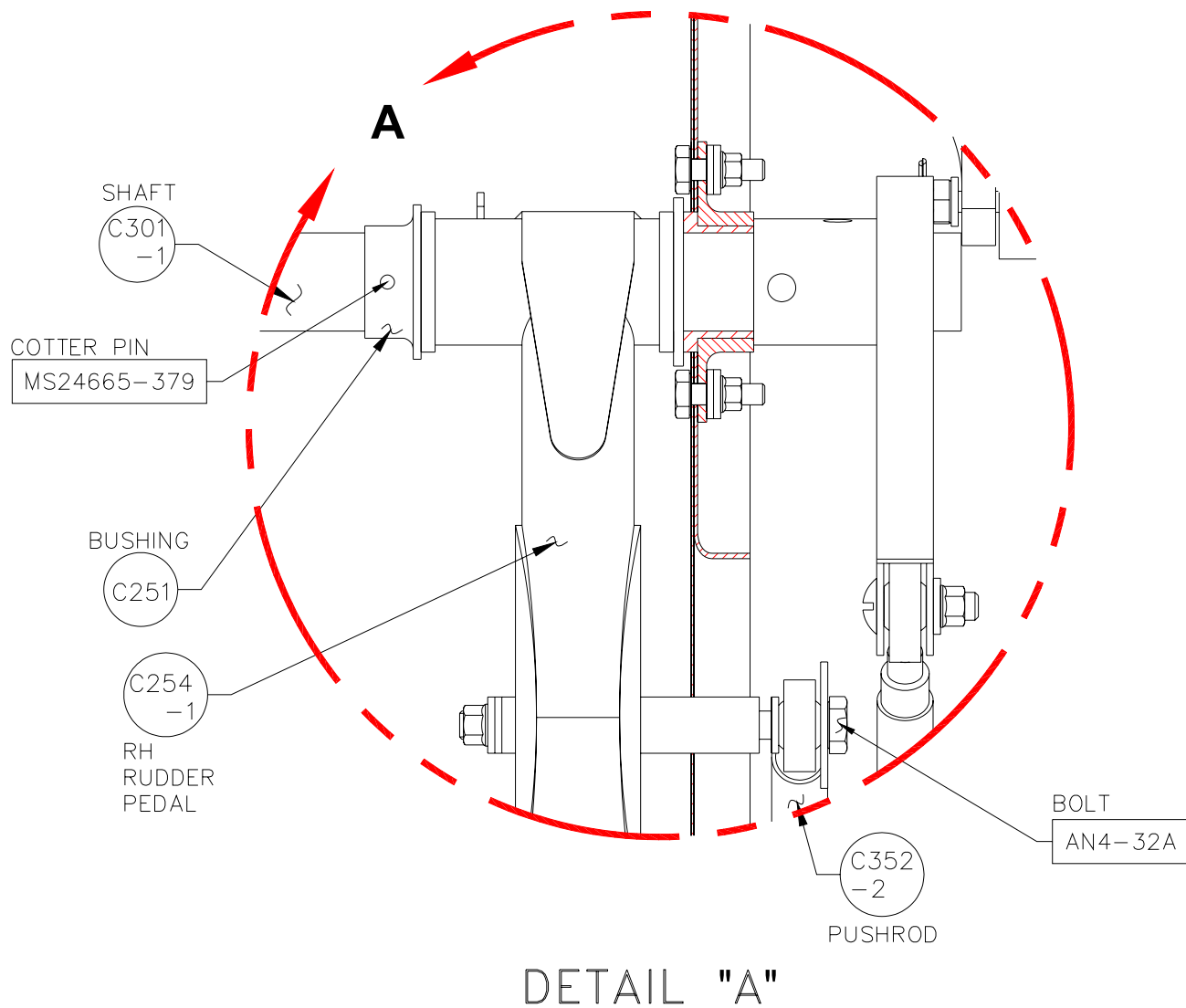


Figure 2
Rotated 90° Counter Clockwise

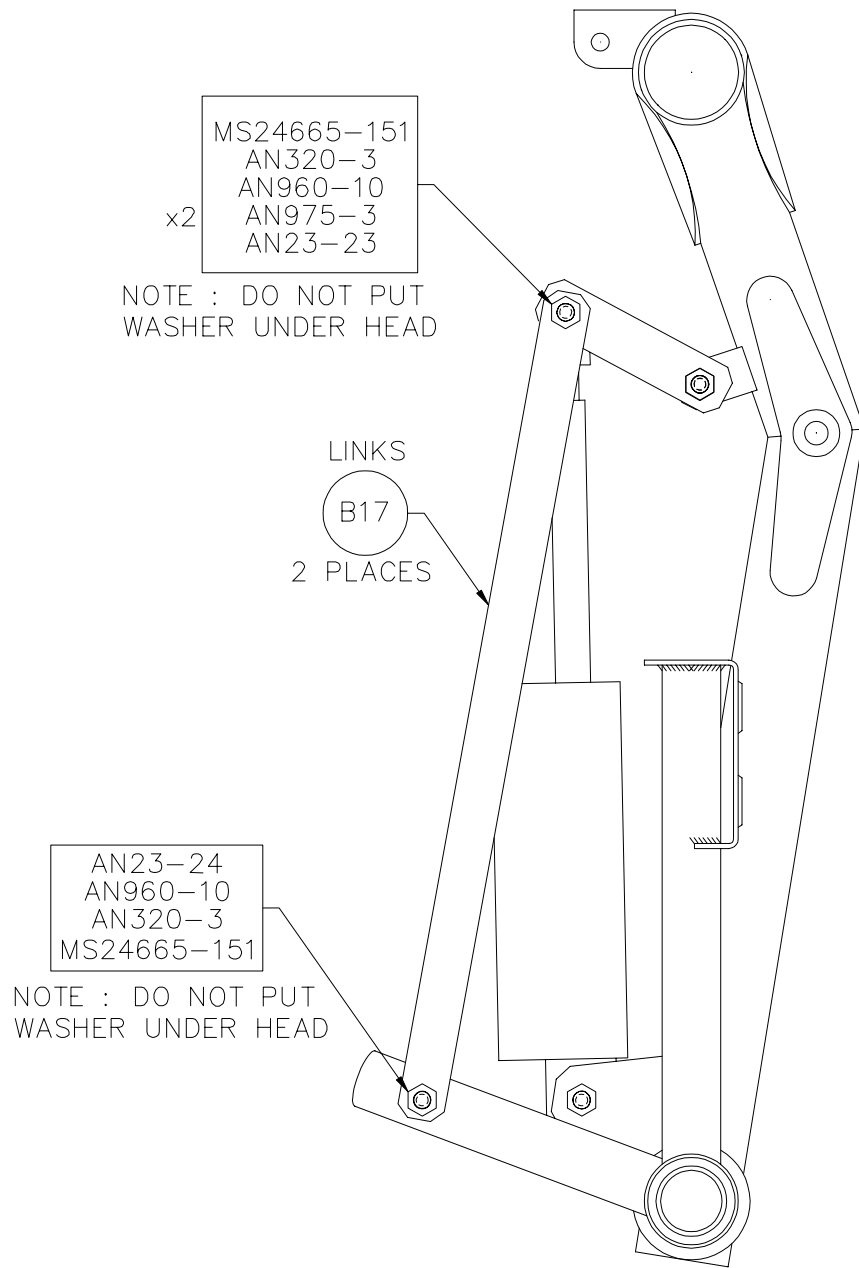


Figure 3
Pilot Right Rudder Pedal – Existing Links
View Looking Inboard

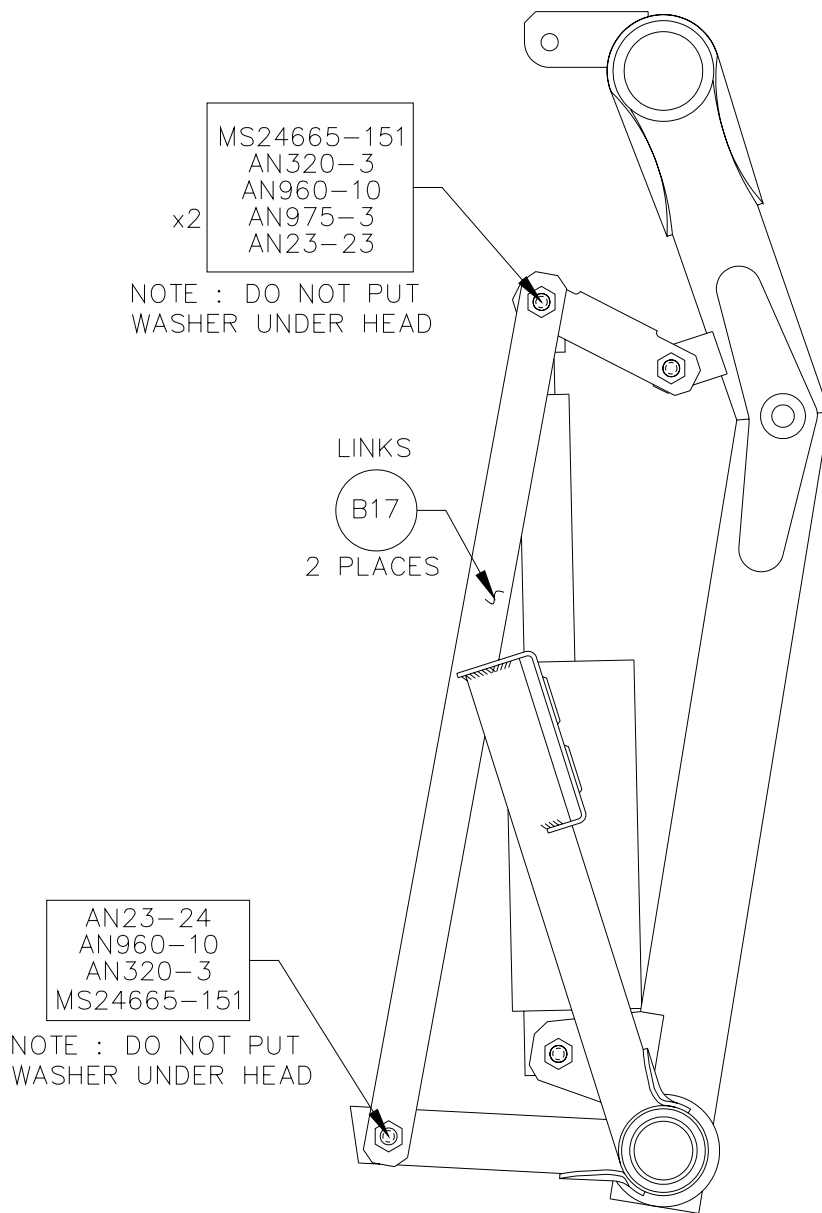


Figure 4
Pilot Right Rudder Pedal – New Links
View Looking Inboard

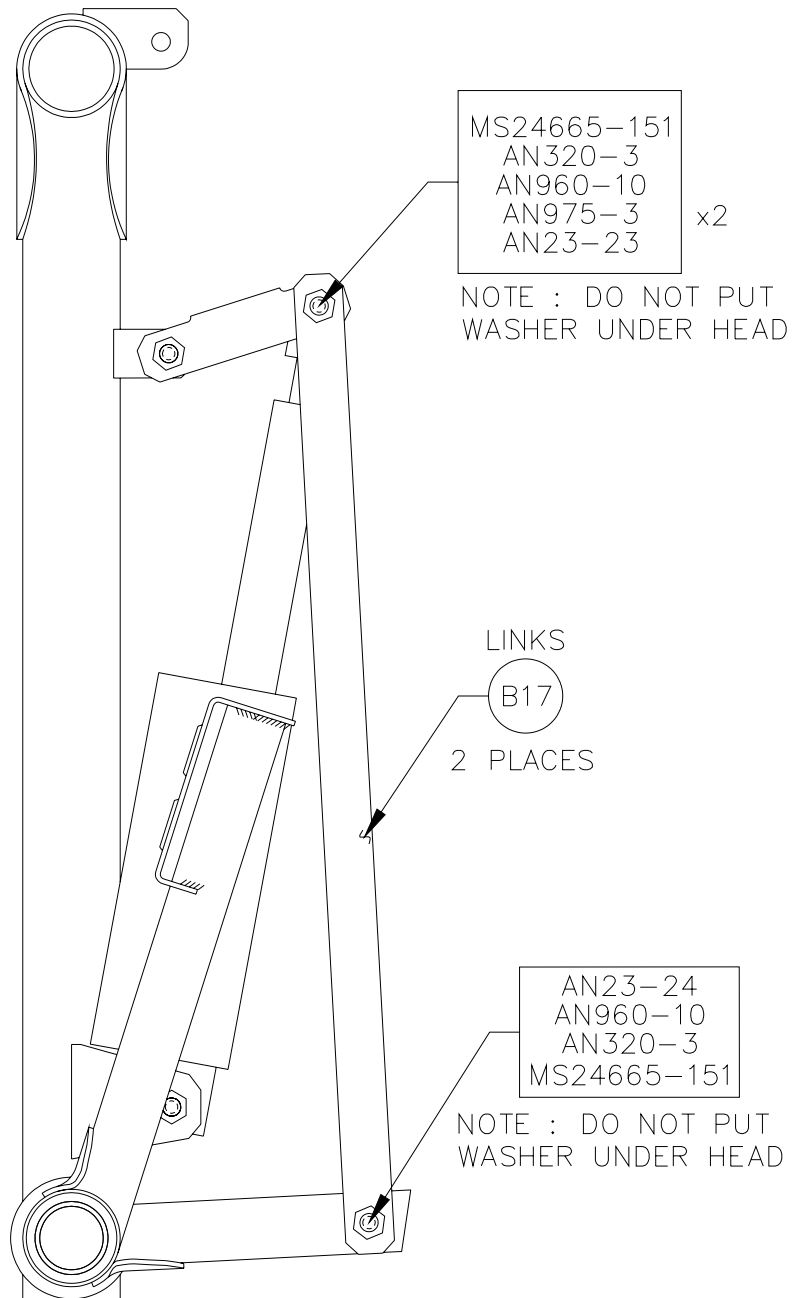


Figure 5
Pilot Left Rudder Pedal – New Links
View Looking Outboard

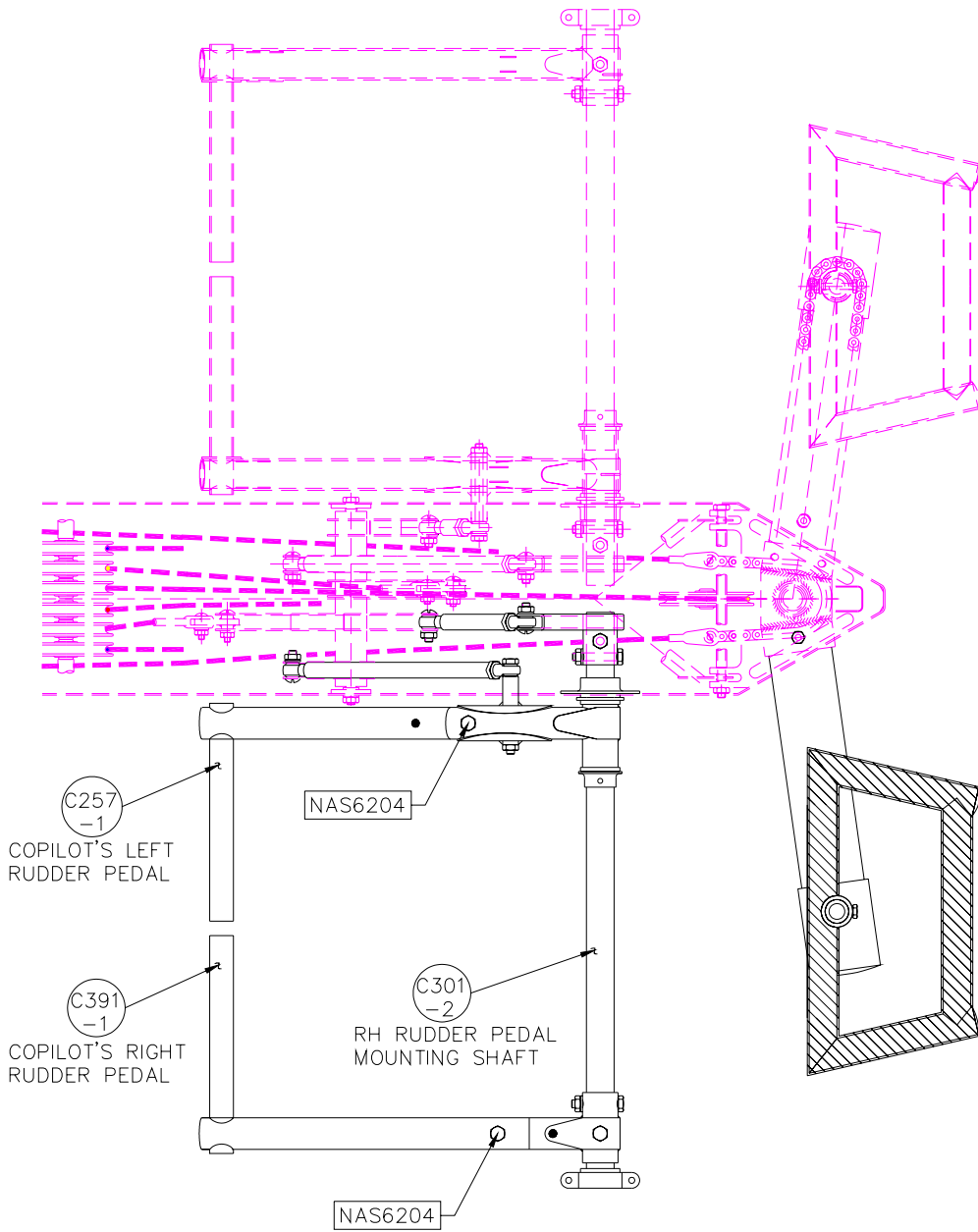


Figure 6
Copilot Rudder Pedals
View Looking Forward