

Chapter 56

WINDOWS

FBA-2C1, FBA-2C2, FBA-2C3
FBA-2C4, FBA-2C3T, FBA-2C4T

Found Aircraft Canada
Maintenance Program FAC2-M200

INTENTIONALLY LEFT BLANK

FBA-2C1, FBA-2C2, FBA-2C3
FBA-2C4, FBA-2C3T, FBA-2C4T

Found Aircraft Canada
Maintenance Program FAC2-M200

INTENTIONALLY LEFT BLANK

FBA-2C1, FBA-2C2, FBA-2C3
FBA-2C4, FBA-2C3T, FBA-2C4T

Found Aircraft Canada
Maintenance Program FAC2-M200

INTENTIONALLY LEFT BLANK

56 WINDOWS

56-00 GENERAL

There are a total of seven windows in the 2C1 and 2C2 aircraft. There is a windshield, one side window on each side of the cockpit and one in each of the four doors.

There are a total of five windows in the 2C3 and 2C4 aircraft. The windshield which wraps around the cabin to form side windows and one window in each of four doors. The windshield is a single piece of 0.187" (for S/N 29 to 34) or 0.236" (for S/N 35 and on) formed acrylic. The two side cockpit windows are 0.125" flat acrylic.

Each of the door windows are 0.125" flat or formed acrylic.

FBA-2C1, FBA-2C2, FBA-2C3
FBA-2C4, FBA-2C3T, FBA-2C4T

Found Aircraft Canada
Maintenance Program FAC2-M200

INTENTIONALLY LEFT BLANK

56-10 FLIGHT COMPARTMENT

56-10-10 Windshield (2C1 and 2C2)

Refer to Figure 56-10-01

Windshield Removal

CAUTION: The windshield should not be removed or installed if only one side of the aircraft is on jacks.

- Step 1. Remove wing leading edge to fuselage fairings.
- Step 2. Remove the forward lower corner fairing.
- Step 3. Remove side retainer strips.
- Step 4. Loosen the fasteners on the upper keeper strip. Do not remove fasteners.
- Step 5. Open the left and right hand side engine cowlings.
- Step 6. Remove the forward retaining strip.
- Step 7. Carefully remove the seal taking caution not to damage the windshield or surrounding structure. A non metallic tool is recommended.
- Step 8. Remove windshield
- Step 9. Place windshield on a flat surface of sufficient size to ensure its safety. Ensure the surface is padded with a clean soft material which will not scratch the windshield. Never place windshield in the vertical position unless lower end is padded and a tie off is used to prevent the windshield from falling.

Note: Exercise care when removing the windshield not to loose the two spacers at the top of the windshield – they are required for reinstallation of the windshield

Windshield Installation

Note: Place the two spacers in position at the top of the windshield (either a new or used windshield) and keep the windshield pushed lightly against them during installation.

Step 1. If original windshield is being installed, proceed to Step 4.

Step 2. Place new windshield in position and edge trim as required to ensure that windshield will not interfere with any fasteners. Ensure the trimmed edges are smooth (rounded) with 240 or higher grit sanding paper.

Step 3. Lay on a bead of sealant around entire windshield opening. Ref. 20-30-03 for sealant requirement.

Step 4. Position windshield in aircraft

Step 5. Position windshield in upper keeper strip.

Step 6. Ensure 100% contact between windshield and windshield sealant.

Step 7. Install the forward retaining strip.

Step 8. Install side retainer strips.

Step 9. Install the forward retaining strip.

Step 10. Install the forward lower corner fairing

Step 11. Secure fasteners on the upper keeper strip.

Step 12. Torque all fairing fasteners to 25 in-lbs.

Step 13. Torque upper keeper strip fasteners to 40 in-lbs

Step 14. Install wing leading edge to fuselage fairings.

Step 15. Fillet seal perimeter of the windshield and leading edge fairings with PRC or equivalent sealer.

Step 16. Close engine cowlings.

56-10-15 Windshield (2C3 and 2C4)

Refer to Figure 56-10-02

Windshield Removal

CAUTION: The windshield should not be removed or installed if only one side of the aircraft is on jacks.

Step 1. Remove wing leading edge cuff.

Step 2. Remove side retainer strips.

Step 3. Remove center retaining strip.

Step 4. Loosen the fasteners on the upper keeper strip. Do not remove fasteners.

Step 5. Carefully remove the seal taking caution not to damage the windshield or surrounding structure. A non metallic tool is recommended.

Step 6. Remove windshield.

Step 7. Place windshield on a flat surface of sufficient size to ensure its safety. Ensure that the surface is padded with a clean soft material which will not scratch the windshield. Never place windshield in the vertical position unless lower end is padded and a tie off is used to prevent the windshield from falling.

Windshield Installation

Step 1. If original windshield is being installed, proceed to Step 3.

Step 2. If new windshield is being installed place in position and edge trim as required to ensure that windshield will not interfere with any fasteners. Ensure the trimmed edges are smooth (rounded) with 240 or higher grit sanding paper.

Step 3. Lay on a bead of sealant around entire windshield opening. Ref. 20-30-03 for sealant requirement.

Step 4. Position windshield in aircraft

Step 5. Position windshield in upper keeper strip

Step 6. Ensure 100% contact between windshield and windshield sealant.

Step 7. Install center retaining strip.

Step 8. Install side retainer strips.

Step 9. Torque all fairing fasteners to 25 in/lbs.

Step 10. Torque upper keeper strip fasteners to 40 in/lbs

Step 11. Install wing leading edge to fuselage fairings.

Step 12. Fillet seal perimeter of the windshield and leading edge fairings with PRC 1422 or equivalent sealer.

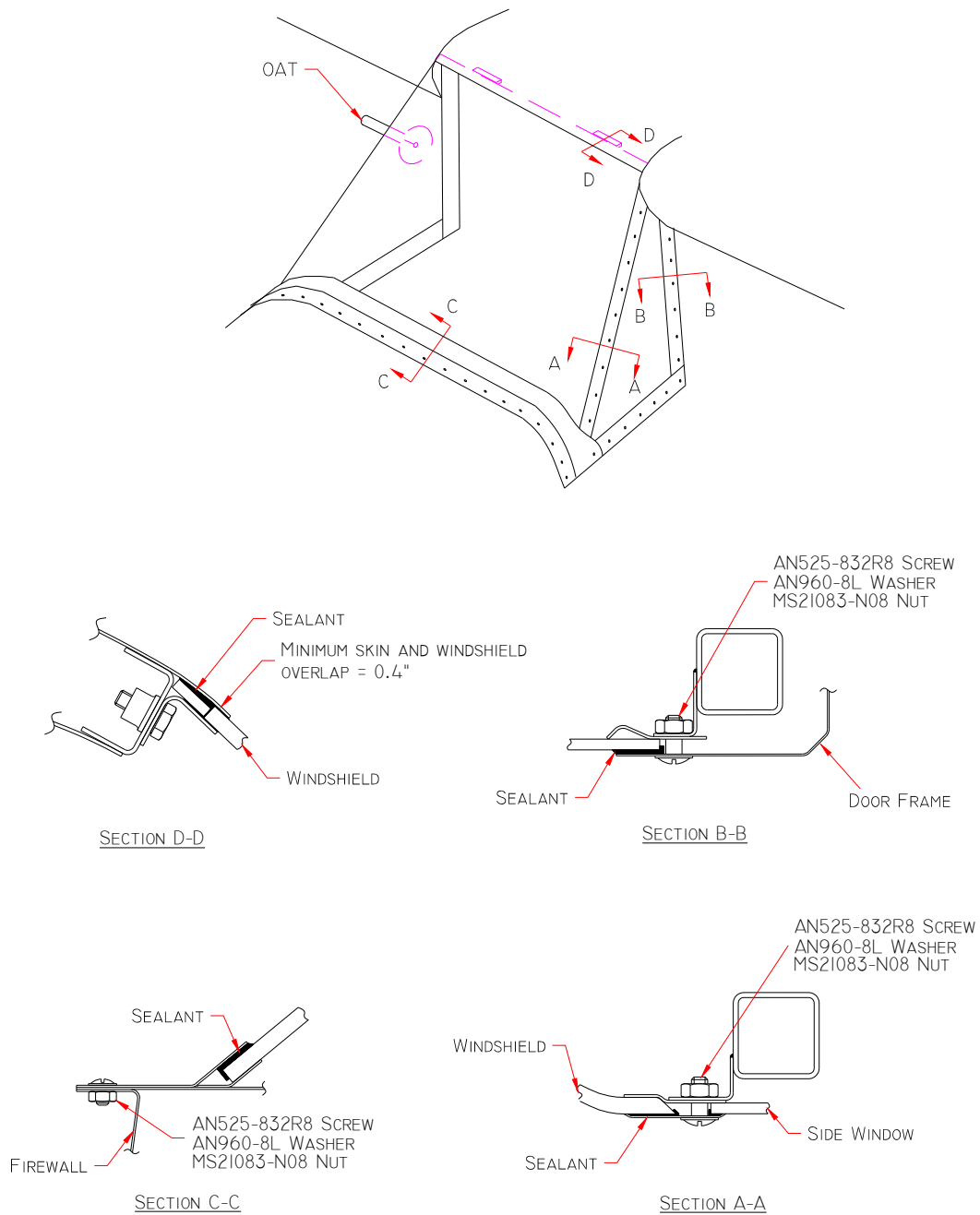


Figure 56-10-01: Windshield Installation (2C1 & 2C2)

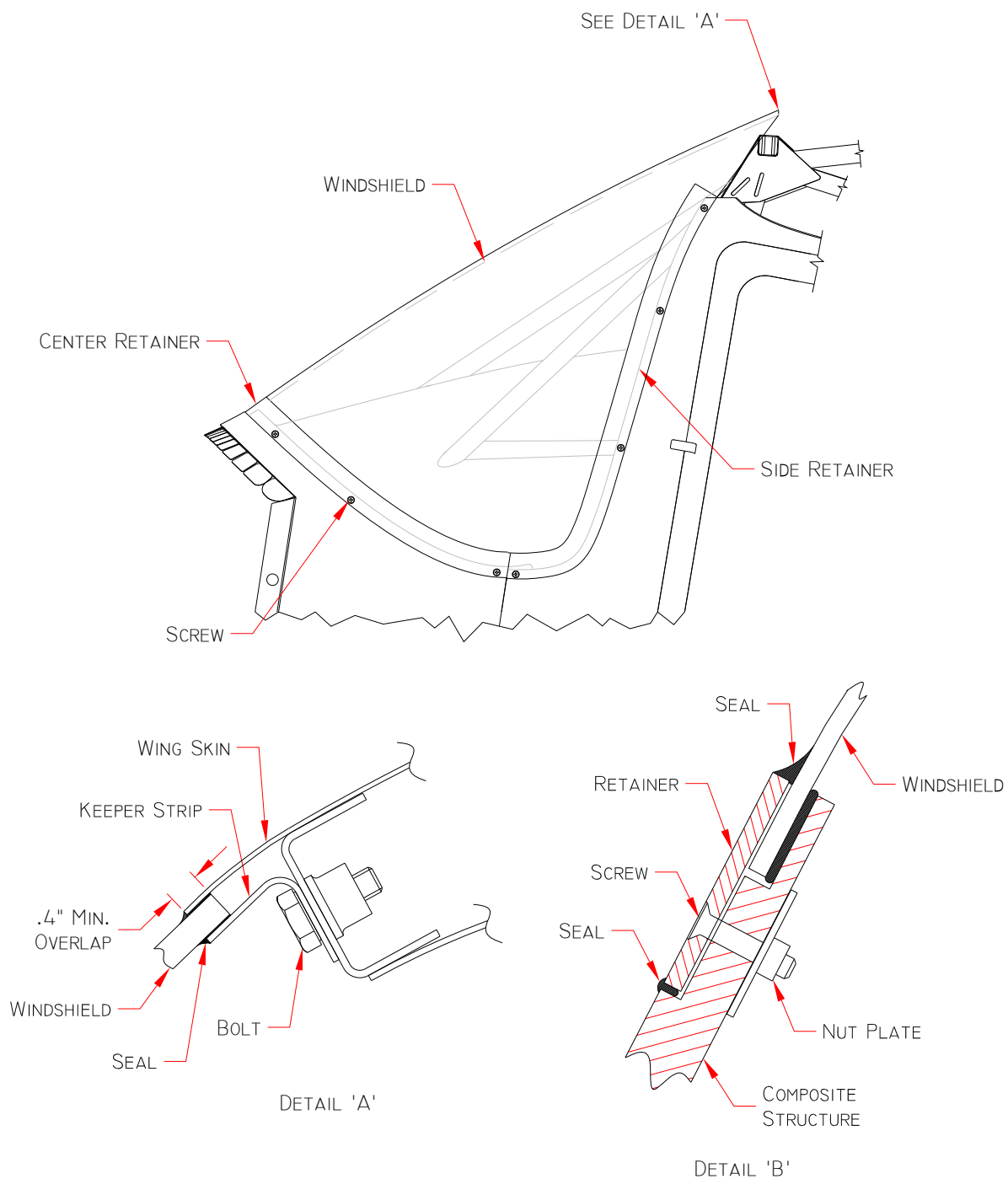


Figure 56-10-02: Windshield Installation (2C3 & 2C4)

56-10-20 Side Windows (2C1 and 2C2)

Refer to Figure 56-10-01

Side Window Removal

- Step 1. Remove wing leading edge to fuselage fairing.
- Step 2. Unfasten the forward lower corner of the windshield fairing.
- Step 3. Remove forward retaining strip.
- Step 4. Remove aft retaining strip.
- Step 5. Remove lower retainer strip. Window is now free.
- Step 6. Carefully remove the seal taking caution not to damage the windshield or surrounding structure. A non metallic tool is recommended.
- Step 7. Place window on a flat surface of sufficient size to ensure its safety. Ensure that the surface is padded with a clean soft material which will not scratch the window.

Side Window Installation

- Step 1. If original window is being installed, proceed to Step 3.
- Step 2. If new window is being installed place in position and edge trim as required to ensure that window will not interfere with any fasteners.
- Step 3. Lay on a bead of sealant around entire windshield opening. Ref. 20-30-03 for sealant requirement.
- Step 4. Reverse removal steps 1 through 6 above.

Note: If window is being replaced, remove the Outside Air Temperature probe from the old window and install in the new window.

FBA-2C1, FBA-2C2, FBA-2C3
FBA-2C4, FBA-2C3T, FBA-2C4T

Found Aircraft Canada
Maintenance Program FAC2-M200

INTENTIONALLY LEFT BLANK