

CHAPTER 76

ENGINE CONTROLS

Figure And Index Number	GROUP 2C1 & 2C2 Engine Controls		Effect.	Vendor Ident.	Units Per Assy
	MAJOR ASSEMBLY	Mixture Control			
	PART No.	DESCRIPTION			
1-	N45-1	Engine Installation 300HP (Mixture Control)			
-1	N45-4	Mounting Bracket			1
-2	F353-35	Eyeball Assembly			1
-3	565-550-B-G-005	Mixture Cable		TUT	1
-4	HF3M	Heim Rod End		HEI	1
-5	AN315-3	Nut, Jam, 3/16 Dia.			1
-6	AN3-8	Bolt Hex Head, 3/16 Dia.			1
-7	DWO10SS	Washer, Countersunk, 3/16 Dia.			1
-8	AN960-10L	Washer, Plain Flat, 3/16 Dia.			4
-9	AN310-3	Nut, Castellated, 3/16 Dia.			1
-10	MS24665-134	Cotter Pin			1
-11	AN503-416-10	Screw, Coarse Thread. ¼ Dia			2
-12	AN960-10	Washer, Plain Flat, 3/16 Dia.			2

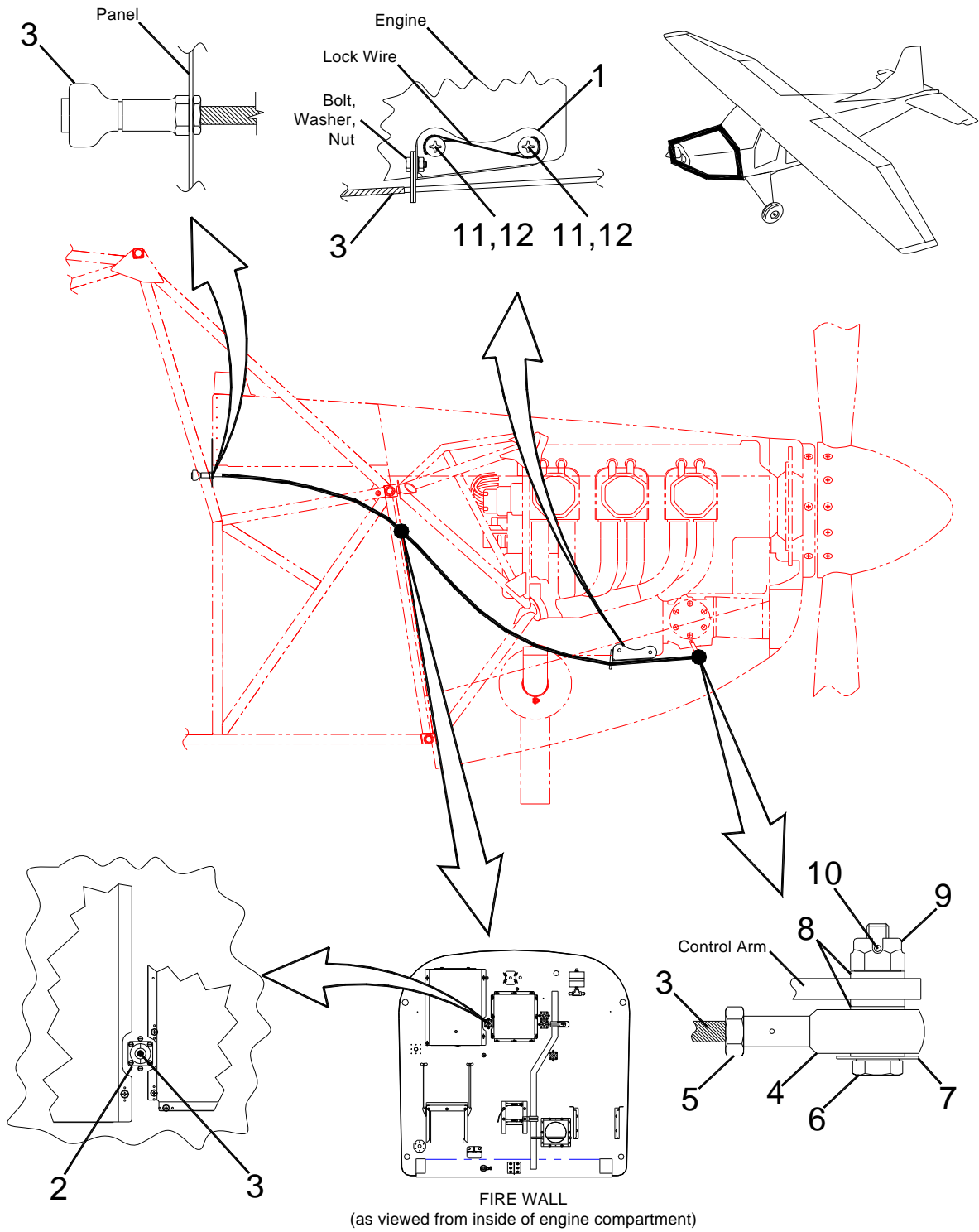


Figure 1
2C1 & 2C2 Mixture Control

Figure And Index Number	GROUP 2C3 & 2C4 Engine Controls		Effect.	Vendor Ident.	Units Per Assy
	MAJOR ASSEMBLY	Mixture Control			
	PART No.	DESCRIPTION			
1-	N2311	Mixture Control Installation			
-1	565-550-B-G-60	Mixture Cable		TUT	1
-2	AN315-3	Jam Nut, #10			1
-3	HF3M	Heim Rod End		HEI	1
-4	AN970-3	Washer, Flat, #10			1
-5	MS24665-151	Cotter Pin			1
-6	AN310-3	Nut, Castellated, #10			1
-7	AN960-10	Washer, Plain Flat, #10			3
-8	AN960-10L	Washer, Thin Flat, #10			1
-9	AN3-10	Bolt Hex Head, #10			1
-10	N45-3	Mounting Bracket			1
-11	AN503-416-10	Screw, Coarse Thread. ¼ Dia.			2
-12	AN960-416L	Washer, Thin Flat, ¼ Dia.			4
-13	AN4-5A	Bolt Hex Head, ¼ Dia.			1
-14	MS21042-4	Nut, ¼ Dia.			1
-15	MS21919WCJ5	Adel Clamp			2
-16	AN3-3A	Bolt Hex Head, #10			1
-17	MS21042-3	Nut, #10			1
-18	F353-35	Eyeball Assembly			1

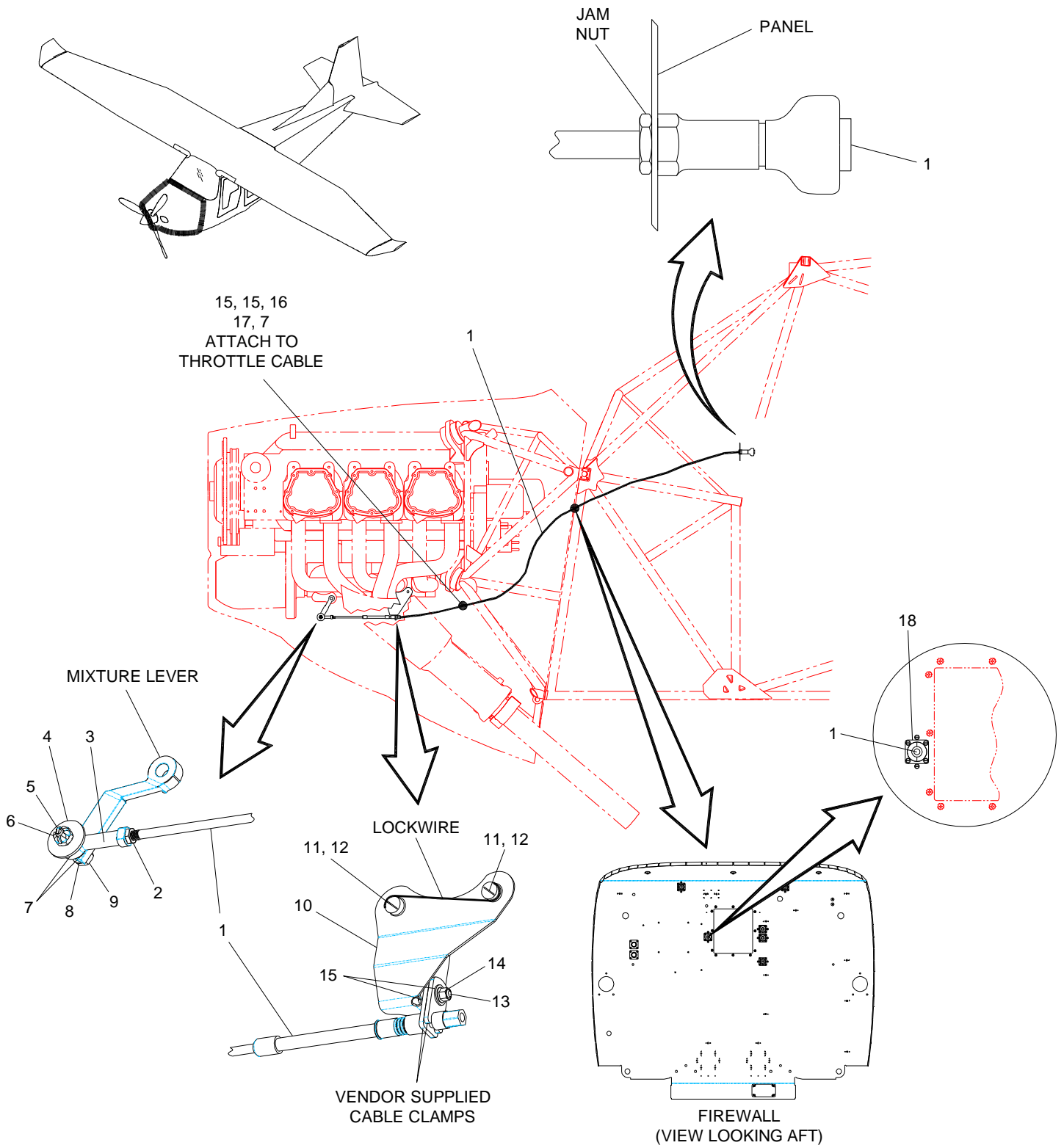


Figure 1
2C3 & 2C4 Mixture Control

Figure And Index Number	GROUP 2C1 & 2C2 Engine Controls		Effect.	Vendor Ident.	Units Per Assy
	MAJOR ASSEMBLY	Throttle Control			
	PART No.	DESCRIPTION			
1-	N45-1	Engine Installation 300HP (Throttle Control)			
-1	N45-3	Mounting Bracket			1
-2	F353-35	Eyeball Assembly			1
-3	565-555-G-005	Throttle Cable		TUT	1
-4	HF3M	Heim Rod End		HEI	1
-5	AN315-3	Nut, Jam, 3/16 Dia.			1
-6	AN3-8	Bolt Hex Head, 3/16 Dia.			1
-7	DWO10SS	Washer, Countersunk, 3/16 Dia.			1
-8	AN960-10L	Washer, Plain Flat, 3/16 Dia.			4
-9	AN310-3	Nut, Castellated, 3/16 Dia.			1
-10	MS24665-134	Cotter Pin			1
-11	AN503-416-10	Screw, Coarse Thread. 1/4 Dia			2
-12	AN960-10	Washer, Plain Flat, 3/16 Dia.			2

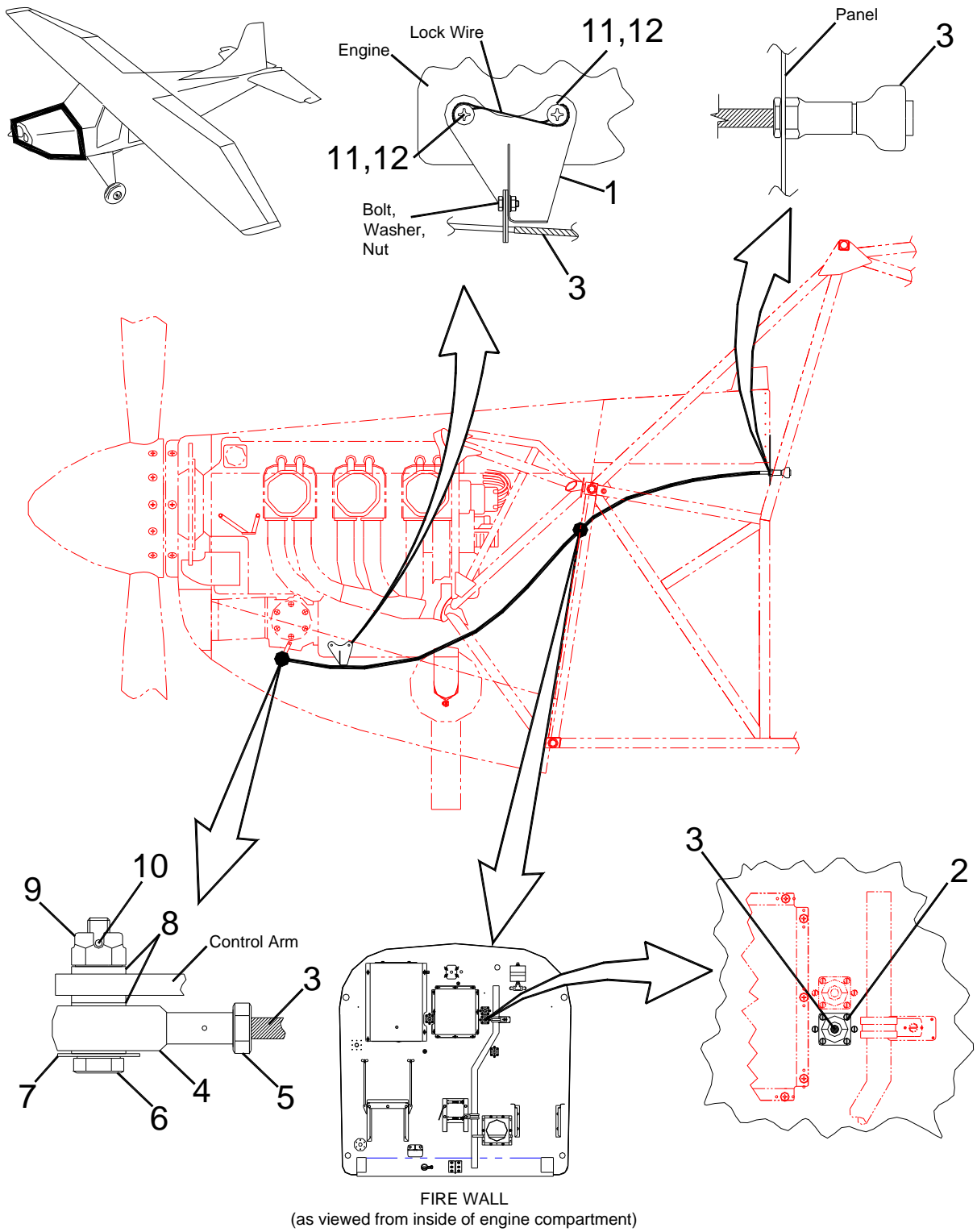


Figure 1
2C1 & 2C2 Throttle Control

Figure And Index Number	GROUP 2C3 & 2C4 Engine Controls		Effect.	Vendor Ident.	Units Per Assy
	MAJOR ASSEMBLY	Throttle Control			
	PART No.	DESCRIPTION			
1-	N2307	Throttle Control Installation			
-1	565-555-G-60	Throttle Cable		TUT	1
-2	MS24665-151	Cotter Pin			1
-3	AN310-3	Nut, Castellated, #10			1
-4	AN960-10L	Washer, Thin Flat, #10			1
-5	AN3-10	Bolt Hex Head, #10			1
-6	AN960-10	Washer, Plain Flat, #10			2
-7	AN970-3	Washer, Flat, #10			1
-8	HF3M	Heim Rod End		HEI	1
-9	AN315-3	Washer, Plain Flat, 3/16 Dia.			1
-10	N45-4	Mounting Bracket			1
-11	AN503-416-10	Screw, Coarse Thread. 1/4 Dia.			2
-12	AN960-416L	Washer, Thin Flat, 1/4 Dia.			4
-13	AN4-5A	Bolt Hex Head, 1/4 Dia.			1
-14	MS21042-4	Nut, 1/4 Dia.			1
-15	F353-35	Eyeball Assembly			1

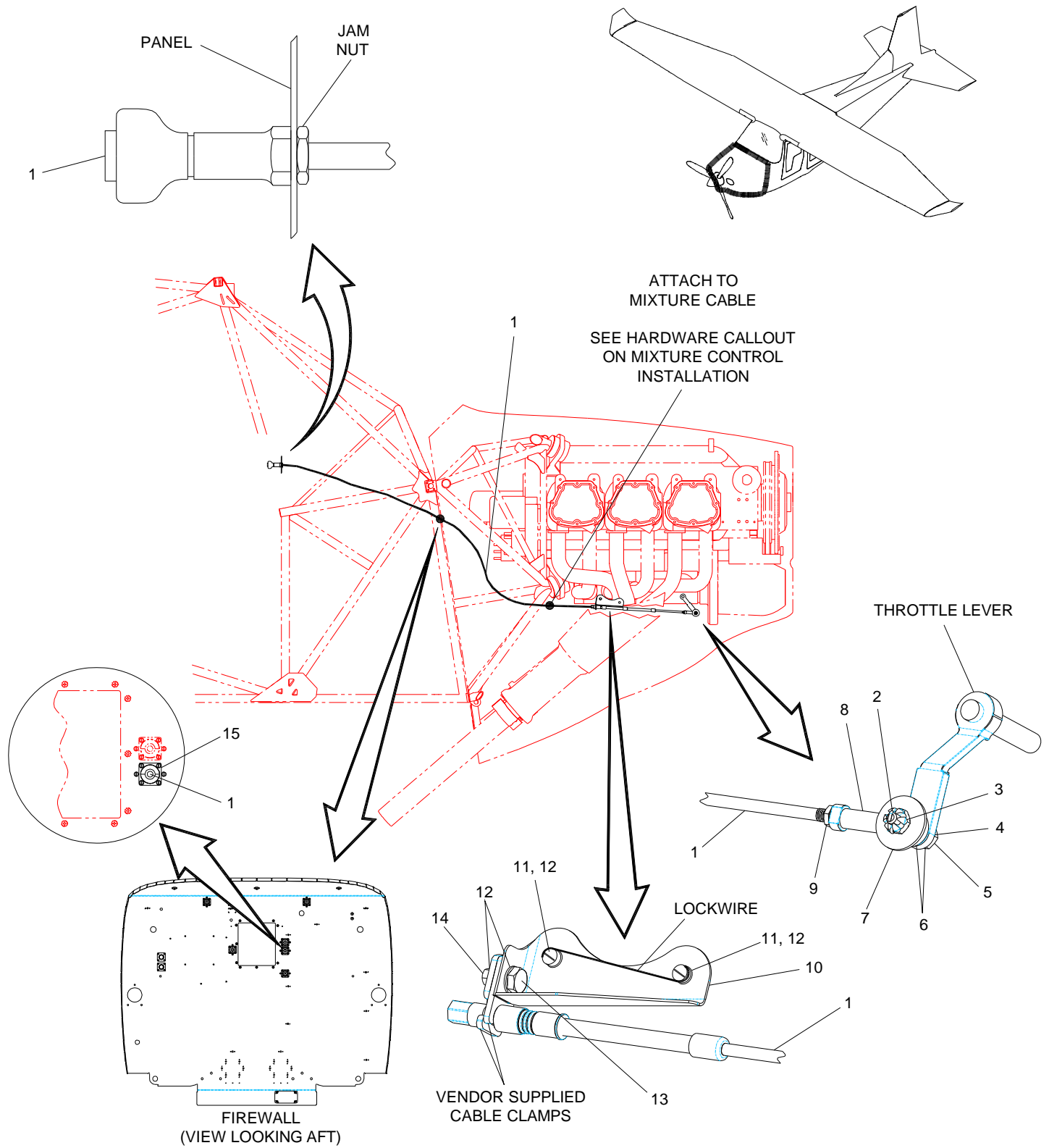


Figure 1
2C3 & 2C4 Throttle Control